

**FB8000PRO** Generation 2

# Bringing short to medium run cutting in-house



Tabbed dividers



Shaped wedding stationery



Intricate wallets and folders



Contour cut mailers



Premium cosmetics packaging



Hotel key card pouches





## Die Cutting REBORN ColorCut auto sheet feeding

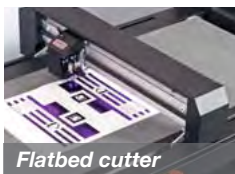
# Automated digital die cutting



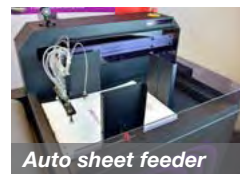
### Key features

Auto sheet feeding flatbed cutting system

- Digital die cutter for on-demand cutting
- Dual tool head for cutting, creasing, scoring and perforation - with up to 1kg force
- Auto sheet feeding for high productivity
- High-capacity stacker accepts up to 25kg (2,000 sheets) of printed media
- Pneumatic suction media pick up
- High-speed synchronised feeding
- Continuous belt cutting table
- Driven by ColorCut Pro software
- QR coded Job Library for file retrieval
- Optical camera for accurate registration
- Mixed jobs can be loaded and cut
- Optional ColorCut Pro Server Station



Flatbed cutter



Auto sheet feeder

### Discover Intec's second generation of automated digital die cutting systems.

Designed in the UK, the new ColorCut FB8000PRO has evolved by combining innovative technologies with uncompromising design, engineering and construction refinements. FB8000PRO now delivers greater media control and flexibility combined with significantly enhanced productivity.

The FB8000 PRO brings precision, practicality and productivity to automated on-demand digital die cutting.

In conjunction with ColorCut Pro3 software, the FB8000's firmware has been re-engineered with intelligent cutting algorithms to deliver a truly outstanding performance. This makes the new generation Intec FB8000PRO up to 40% faster than its predecessor.

The advanced auto sheet feeder delivers precise media handling for a perfectly synchronised, high speed, digital die cutting system.



### New FB8000PRO in a nutshell...

**A digital die cutting system** enabling printed sheets to be cut and creased using lines drawn from leading vector graphic design applications. Being digital, sheets can be cut instantly and on-demand, without sending out for dies or to have cutting forms made. Automated functionality enables unattended operation.

**The autosheet feeder** enables users to stack up to 25kg of sheets, which are loaded on to the cutting belt using a pneumatic feed system with vacuum pick up fingers and a sophisticated airblade system, to virtually eliminate misfeeds.

**The cutter** receives the auto fed sheets onto its cutting mat and uses a high resolution CCD camera to scan registration marks and also read QR codes to identify and automatically retrieve the appropriate cutting file from the ColorCut Pro's remote job library. The FB8000 can cut and crease a single sheet through a set number of copies to the entire media stack in the feeder. Even coping with a mixed batch of different jobs, each cut accurately, efficiently and reliably.



### Advanced digital cutting system

**Digital cutting.** Save time and money. No need to purchase and wait for traditional cutting dies to be made. Intec's FB8000 cutters use advanced digital contour cutting technology to follow artwork lines drawn in Adobe® Illustrator® or CorelDRAW® enabling you to cut absolutely any shape on demand, with no setup costs.

**Bring short & medium cutting runs in-house.** Even one-off sheets can be cut on demand, cutting a typical SRA3 sheet in just 15-45 seconds. As there are no set-up costs or dies to be made, this enables users to easily and affordably produce anything from a one-off sample to full daily production.

**Versatile media handling.** The FB8000 is suitable for cutting a wide range of media formats. In automatic mode, using the Auto Sheet Feeder for unattended operation, the maximum media size is 335mm x 500mm. However, larger sheets can be cut in manual mode and the FB8000 will accept sheets up to 500mm x 700mm, when manually positioned.

**Two-zone vacuum hold down conveyor table.** Printed sheets are held securely in place on the revolving felt cutting mat, by a vacuum, which is produced by a powerful 750W high speed pump (included).

The cutting table features 2 suction zones, enabling auto fed sheets to benefit from higher suction - where even laminated sheets can easily be held firmly in place - especially when all suction is focused into zone 1 for auto-feeding.

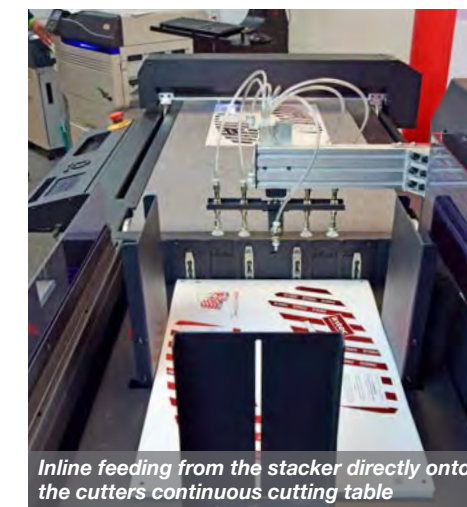
**Perfect alignment of cut jobs.** The FB8000 includes the high speed Vision3 registration and job recognition system, to quickly and accurately pinpoint the job registration marks as soon as each sheet has been loaded. The system uses an on-board, high resolution CCD video camera which works seamlessly with the Intec ColorCut Pro3 cutting software. The camera also reads QR codes, which can be created when designing cut jobs - enabling the FB8000 to instantly retrieve cut files automatically.

**Two operations from one cutter.** The ColorCut FB8000 uses a dual tool cutting/creasing carriage head. Each tool operates independently reducing operation time and improving productivity. The cutting tool is supplied with a range of blades enabling a wide range of media to be cut from kiss-cut labels up to 600 micron card stock.

The creasing tool is double-ended, offering a choice of wide or narrow crease, as required. This is further supplemented by the ColorCut Pro3 software which enables a multi-crease option to aid the creasing of difficult substrates.

**Class leading 1kg of pressure.** Each cutting/creasing tool delivers up to 1kg of pressure (2x more than most other cutters in this class). The high pressure capability produces the best creasing possible and increases the range of media that can be cut. This includes options such as; polyester sheets and magnetic media.

**Batch productivity to save time.** The FB8000 supports two productivity modes. When used in 'manual mode' (normally without the feeder), users can place multiple



sheets onto the cutting bed. With the control settings set to 'productivity mode', ColorCut will proceed to cut each sheet in turn until all sheets on the bed are cut.

### Synchronised stacking and feeding



Air pulse knock down nozzle, suction pick ups and air blade separation jets

**Poetry in motion.** The auto sheet feeder, can stack up to 25kg (2,000 sheets) of printed media, which is pneumatically lifted and loaded onto the FB8000's continuous feed cutting belt - in perfect synchronisation. The QR code job retrieval system even allows a mixed stack of jobs to be loaded and cut accurately, thanks to the ColorCut Pro3 software.

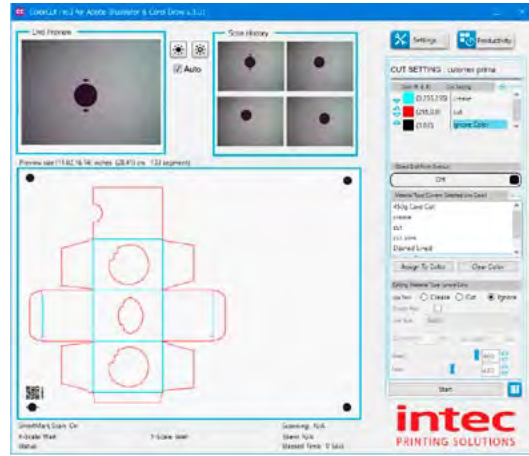
**Air pulse knock down nozzle** is a new feature which shoots a pulsed sequence of blasts down onto the top sheet, knocking down difficult media, as the stacker pneumatically lowers the stack and raises it after each sheet has been fed.

**Separation air blade** ensures perfect feeding by separating the individual sheets at the top of the stack as the stacker is raised for the next sheet feed.

**Pneumatic control centre** is located on the side of the unit and offers full control over the generation, storage and delivery of air for the vacuum and pneumatic functions.

**Easy access maintenance** is now made possible via the full panel rear access door. Both feeder and cutter are now fitted with wheels for effortless mobility.





## Take full control with ColorCut Pro3 software

Intec has produced a bespoke suite of programs for all ColorCut flatbed cutting tables.

This software is supplied with all models and has been developed to optimise their use and help users cut projects with absolute simplicity.

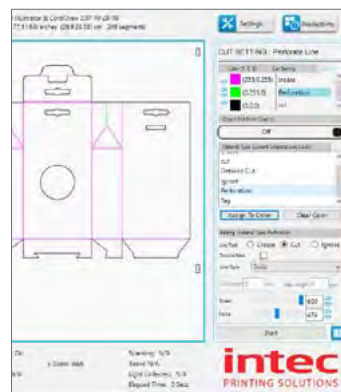
# Software

### ColorCut Pro explained

ColorCut Pro's main application fully integrates with the leading drawing packages; Adobe® Illustrator® and CorelDRAW®.

**ColorCut Pro - Job Library Server**, is a stand alone application which stores cut files and enables users to cut previously prepared cut files, either by recalling the job number or by reading the QR code on the sheet, without the need to launch Adobe Illustrator or CorelDRAW. Conveniently, ColorCut Pro's Job Library Server, can be used on PC's in remote production departments.

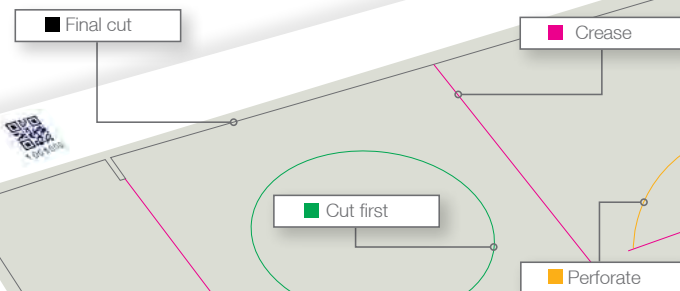
**Software and hardware.** Intec makes both the hardware and the software for all its range of ColorCut flatbed machines - everything is designed to work together. Intec's Vision3 CCD Camera Registration System, is integrated into the Intec FB8000 to read registration marks and detect the position of sheets on the cutting table. ColorCut Pro has an advanced feature to compensate for print skew or positioning skew - effectively redrawing the artwork, according to the error, to ensure maximum precision when performing contour cuts. The Vision3 Registration Camera will also read QR codes applied to printed files, and retrieve the cutting files from the ColorCut Pro Job Library database, associated with the specific design.



**What is contour cutting?** Contour cutting involves placing a drawn outline around an object and using the Intec ColorCut flatbed to physically cut it.

**Create.** ColorCut Pro is fully integrated with Adobe Illustrator and CorelDRAW, allowing users to edit any designs, in their package, customise them and finally export them to use with ColorCut Pro.

**Colour recognition.** Working with vector lines in the design, it is possible to set-up cutting/creasing processes using different line colours. This feature recognises different colours and allows users to set types of operation and the processing sequence, by colour.



### Making production tasks, easy!

- No new drawing program to learn
- ColorCut Pro accepts vector lines directly from Adobe Illustrator & CorelDRAW
- Line colour identification
- Material/Action Database
- Control cutting tool speed & force using SmartLine colour
- Productivity mode enables multiple job cutting
- Generate and assign QR Codes to jobs, saving the cutting file to the job library for retrieving later

- Plugin to add registration marks and QR codes for Adobe Illustrator (MAC & PC), CorelDRAW (PC)
- Can cut with or without registration marks
- Customisable registration mark position
- Automatic sensor calibration
- High tolerance to variation in brightness, for coloured media or white marks on dark paper
- Software automatically adjusts for print scale, skew or position errors - up to 5mm
- Automatically turns off vacuum after cutting
- Application environment works in mm or inches
- Working interface can be independent of your drawing program



In addition, the stand-alone version of ColorCut Pro can be installed on different computers, enabling other team members to cut the jobs - perhaps in another location - simply by using the QR code of the assigned job number.



**Smart line control.** Solid lines can be over-ridden in designs, turning them into dashed lines, perforated cuts or even small tags to hold designs into the cut sheet.

**Click start.** Once positioned on the first registration mark, the Vision3 camera will automatically detect the 2nd, 3rd and 4th marks with the ColorCut Pro software, compensating for any scale, skew or position errors. Cutting will then start automatically.

### How does ColorCut Pro work?

**Productivity controls for production runs.** In manual mode, multiple sheets can be placed on the table and ColorCut Pro can be set to search for each sheet and cut it - improving productivity. For complex designs it is possible to change the cutting sequence and order. Plus, with the auto-feeder, ColorCut Pro can cut a specific number of copies or continue to run until all sheets have been cut.

**Material database.** It's possible to assign a tool (either cutting or creasing), with tool speed and pressure for each action or material used. Settings can be saved so users can quickly and easily recall them in future. Using the 'SmartLine' colour from the design that has been recognised by ColorCut Pro, assign the material process i.e. cutting 450gsm board or creasing.



### Finding filed jobs using QR codes.

The QR code function will generate a job number and the associated QR code for you. These can be placed on the design and the job saved to the Job Library, enabling faster retrieval of all cut files at a later date.

1006019







6



Dual headed creasing tool

Blade holder

Pen calibration tool

ColorCut Pro user manual  
supplied with all cutters  
and available to download  
from [intecprinters.com](http://intecprinters.com)



Dual tools head  
delivers 1kg of force  
per tool

## Comprehensive range of ColorCut tools and accessories

### Intec offers a comprehensive range of genuine replacement parts.

A full range of original manufacturer parts and accessories are available for after-market purchase. Spares can be purchased at time of ordering the flatbed and/or shipped overnight as and when required.



# Tools & accessories

**Server Station.** Intec's ColorCut Pro Server Station includes a powerful workstation, integrated into an ergonomic stand with a convenient work platform - delivering a compelling addition for any company with Mac or PC users, who require a dedicated turnkey Job Library & production server for cutting jobs.

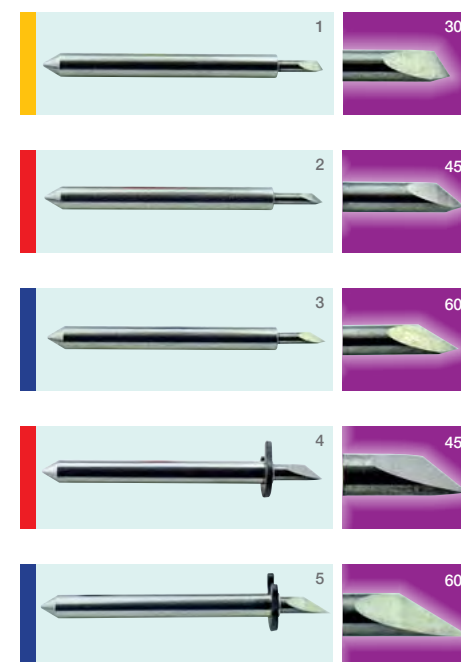
The Server Station is pre-installed with ColorCut Pro's Job Library feature, enabling Mac and PC users to send their cut jobs from ColorCut Pro client, directly to the Server Station and then continue working, whilst the ColorCut Pro Server Station acts as the focal hub for the production and cutting of all jobs.

Running a standalone version of ColorCut Pro Server Station, ensures users can access all jobs saved to the ColorCut Pro Job Library at any time, without requiring Adobe Illustrator or Corel DRAW and without having to re-open the original file.

- Mac or PC systems running ColorCut Pro, can transfer cut files over the network to the ColorCut Pro Job Library on the Server Station
- Assigned job numbers, barcodes or QR codes enable instant retrieval of the associated cutting file
- Designers can adjust cutting file settings without having to re-open the original design and artwork file
- No skilled operators required. ColorCut Pro stands alone, which means cutting operatives do not require access to Adobe Illustrator or Corel DRAW in order to cut jobs



Supplied complete with 20" flat screen, Windows® operating system, pre-installed with ColorCut Pro software.



1. 30° blade 2. 45° blade 3. 60° blade  
4. 45° circlip knife 5. 60° circlip knife

**Creasing tool.** This tool is double-ended, offering a choice of tips for either wide or narrow creases, as desired. Precision engineered, this tool sits in the dual tool head.

**Cutting tool.** The blade holder tool sits in the dual tool head and holds the cutting blade of choice. The tool is manually adjustable to obtain the desired amount of 'blade out' for the job in hand.



**Calibration tool.** Used at set up and then periodically, to calibrate the cutter.

**Cutting mat.** This replaceable grey felt mat is ideal for achieving crisp cuts and deep creasing lines on a wide range of substrates. The natural density of the fibres allows the vacuum flow to pass through it for superb sheet retention. The innovative 'jigsaw' style joint makes it easy to replace.



**Cutting blades.** These ultra-sharp and hard-wearing blades come in two types and three blade angles. Either as a pack of three the same or as a mixed pack.

### Blades:

**Yellow** 30° 1mm ø - For film, very soft material, thin label material

**Red** 45° 1mm ø - Typically for labels, stickers, and thin paper/card

**Blue** 60° 1mm ø - For thick media. Sharply angled tip provides a longer cutting edge, for cutting media from 0.5 to 1.5 mm thick

### Circlip blades:

**Red** 45° 1.4mm ø - Most packing board up to 500 micron. Circlip provides better pressure and improves blade direction changes on dense media, from 0.25 to 0.5 mm thick

**Blue** 60° 1.4mm ø - For thick media. Sharply angled tip provides a longer cutting edge, for cutting media from 0.5 to 1.5 mm thick



**Vacuum pump and silencer.** Powerful 750W vacuum pump with acoustic housing, powers vacuum retention of printed sheets to cutting mat.

**Acoustic silencer.** Reduces sound level of vacuum pump.



**Air compressor.** Provides high pressure, on-demand vacuum and air for the pneumatic feeder.

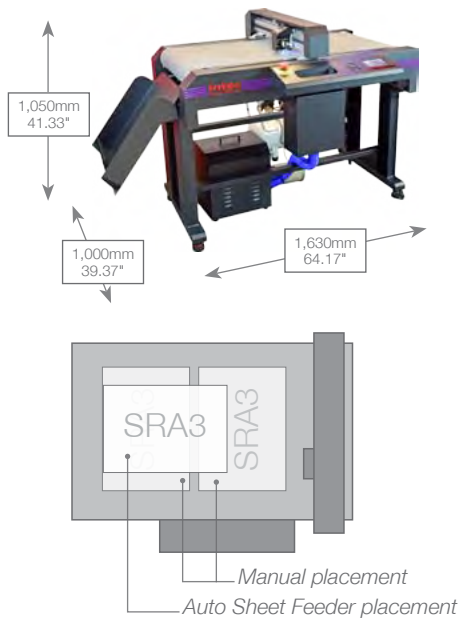


# Specifications

## FB8000

### Dual Tool, Continuous Belt, Digital Cutting Engine

Suitable for on-demand packaging and sheet card cutting – also suitable for sheet labels. Can be fully automated with ASF8000 (below).



CUT AREA FB8000	Auto Sheet Feed	Manual placement
Maximum media area	335mm x 500mm	500mm x 700mm
Effective contour cutting area	315mm x 492mm	470mm x 660mm
Stand	Included	
Media hold-down method	2 zone vacuum Bed (High speed 750W vacuum pump included as standard)	
Cutting mat	Superior felt cutting underlay (one piece user replaceable) continuous belt	
Registration system	High speed CCD Camera - Vision3 Registration System using live video feed	
Job recognition	Advanced QR code technology for instant file recognition and registration	
Acoustic features	Acoustic cover/housing for vacuum pump, silencer for vacuum pump intake	
Media placement	Manual with multi-sheet productivity mode	
Upgradeable media placement*	Optional Auto Sheet Feeder† for unattended operation	
Output tray	Adjustable collection tray	
Weight	250kg (including pump)	

### CUTTING CONTROL

Mountable tools	Blade holder, creasing tool & pen tool (Head is Dual tool so, any 2 can be fitted simultaneously)
Force / Pressure	up to 1kg (960gf) per tool delivered in 4g/step intervals through Intec ColorCut control panel
Blades:	1" x Yellow - 1mm 30° cemented carbide blade - for thin film and very soft material 1" x Red - 1mm 45° cemented carbide blade - for adhesive stickers, thin card under 0.25mm 1" x Blue - 1mm 60° cemented carbide blade - for rigid media, (Polyester sheets). 3" x Red Circlip - Industrial 1.4mm 45° circlip cemented carbide blade - Default blade for cutting card stock and Folding Box board from 0.25 to 0.5mm thick 3" x Blue - 1.4mm 60° circlip cemented carbide blade - for cutting high-intensity reflective film or magnetic media - suitable for cutting media from 0.5 to 1.2 mm thick (restricted by max limit of flatbed)
Creasing tool:	Dual ended (Wide & Narrow) suitable for ≤500gsm cardboard, textured & corrugated paper
Pen holder:	Pen, plotting pen, also used for calibration sensor

### COMPATIBILITY MODE PC & Mac

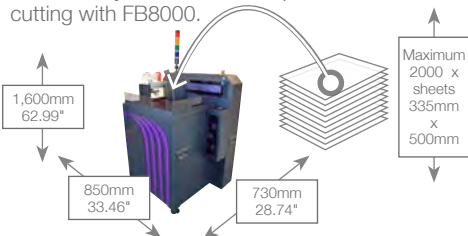
ColorCut Pro 3 – Plugin (PC)	ColorCut Pro3 plug-in (All features available to PC users) . ColorCut Pro can send projects that you have designed in Adobe® Illustrator® or CorelDRAW® directly to your Intec ColorCut Flatbed cutter with no need to convert them to a different format. (requires: PC - Adobe Illustrator® CS1 – CS6, CC, CC2014, CC2015, CC2017, CC2018 , CC2019, or CorelDRAW® X4 - X8, 2017 - 2019)
ColorCut Pro 3 – Plugin (Mac)	ColorCut Pro3 Plugin for Mac enables the ColorCut Pro Job Library Client. Mac users use this to add cut marks to their Illustrator files or assign Job numbers and QR codes, then their jobs are sent to the remote ColorCut Pro job library on a PC for Cutting. (Requires: Illustrator CC2018- 2020)
ColorCut Pro 3 – Standalone	ColorCut Pro3 – Standalone version/Job Server version of ColorCut Pro is PC only, and enables jobs created by the ColorCut Pro plugin (above) to be cut at any time, without requiring Adobe Illustrator or CorelDRAW, and without having to re-open the original file.
PC Minimum Specification	64-bit, 2 GB of RAM (4 GB recommended), Min display resolution : 960x830, For Live Preview PC must have Wi-Fi capability for Direct connection to iVision3 Camera Sensor. (USB Wi-Fi dongle included)

\*Auto Sheet Feeder optional for FB8000. †Standard equipment for FB8000PRO. § Does not support illegal copies of Illustrator. ‡ Full version only. Does not support "Home and Student", "Essentials" edition, or illegal copies of CorelDRAW.

## ASF8000

### Auto Sheet Feeder

Enables fully automatic sheet placement and cutting with FB8000.



AUTO SHEET FEEDER ASF8000	
Maximum media size	335mm x 500mm
Minimum media size	197mm x 285mm
Maximum media weight / stack height	25kg / 22.5cm
Media pick up method	Quad (4) vacuum suction pads
Sheet separation features	Forward facing air blade system with additional stainless steel sheet catches, and air pulse vibration
Sheet advance method	Linear pneumatic cylinder piston
Air Supply	3.5CFM Air compressor (included)
Productivity indicator	4 Light tower indicator
Weight	175kg (including compressor)

## FB8000PRO



**Auto Sheet Feeder Flatbed Cutting Solution**  
Complete system for higher volume automation.



**colorcut pro**  
Digital Die-Cutting for Intec

Dedicated software supplied with all ColorCut flatbeds

**intec**  
PRINTING SOLUTIONS

**Intec Printing Solutions Limited**  
Unit 11B, Dawkins Industrial Estate, Poole, Dorset BH15 4JP UK  
Tel: +44 (0) 1202 845960  
Email: [sales@intecprinters.com](mailto:sales@intecprinters.com)  
[www.intecprinters.com](http://www.intecprinters.com)

© 2020 Intec Printing Solutions. Intec brand names and products are the intellectual property and copyright of Intec Printing Solutions. Adobe Illustrator is a registered trade mark of Adobe Systems Incorporated in the United States and/or other countries. All other trademarks are acknowledged. Equipment specifications are subject to change without prior notice.  
All statistics are variable depending upon external conditions, media type, weight and formats. E&OE